



Turn to a proven partner for a comprehensive selection of the industry's best over-laminates, mounting adhesives, and backing materials. All of our laminates are guaranteed to deliver the same high quality and unmatched performance that you have come to expect from our outstanding line of laminators.

Difficult applications are never a problem at AGL. Send us your most challenging application and we will respond. We have the most experience in the industry on applications and the combination of laminates, papers, and inks to ensure you get a vibrant, sellable graphic while minimizing your waste.

Proven performance, spectacular results, from a name you trust.

1.800.276.2664

We invite you to bring your laminating challenge to AGL!



Mount-Smart™
"The Professional's Choice"

Cover-Rite™
"The Professional's Choice"

Shadow-Block™
"The Professional's Choice"

Print-Smart™
"The Professional's Choice"



Digital Imaging Laminators



Advanced Greig Laminators

801 Burton Blvd • Deforest, WI 53532
608.846.1025 • Fax 608.846.1024
www.aglinc.com
e-mail: info@aglinc.com





AGL 4400

Laminates and mounts a 42.0" wide maximum thermal or pressure sensitive film. Features a pneumatically actuated nip roller assembly with dial in spacer system as well as pneumatic brakes and clutches for repeatable film tension.

- 0 - 15 FPM operating speeds, mechanical and emitter/receiver emergency stops
- 10.0" diameter capacity heavy-duty cantilevered unwind stations.

AGL 6450

Laminates and mounts a 62.0" wide maximum thermal or pressure sensitive film and vinyl transfer capabilities. Features a pneumatically actuated nip roller and pull roll assemblies. Main supply rolls are equipped with a pneumatic clutch/brake assembly. This feature allows precise and repeatable film tension control as well as bi-directional unwind/rewind capabilities. Auxiliary rear unwind/rewind station.

- 0 - 20 FPM operating speeds, mechanical and photoelectric emergency stops
- 12.5" diameter capacity heavy-duty cantilevered unwind stations



AGL 64 Series

Laminates and mounts a 62.0" wide maximum thermal or pressure sensitive laminating film. All models feature 10.0" diameter heavy-duty cantilevered unwind stations, pneumatically actuated nip roller assembly with "dial-in" spacer system, mechanical tension control and 0 - 20 FPM operating speeds.

Available in four models:

- 64i (Bi-Directional)
- 64R (Reversible Multipurpose Machine with Pneumatically Controlled Pull Rollers)
- 64T (Heated Top Nip Roller Only)
- 64C (Cold Lamination and Mounting Only)



AGL 8000

The AGL 8000 offers cold mounting, thermal or pressure sensitive laminating. The AGL 8000 laminates a 79.0" wide maximum pressure sensitive or 74.0" wide maximum thermal film. Main supply rolls are equipped with a pneumatic clutch/brake assembly. This feature allows precise and repeatable film tension control as well as bi-directional unwind/rewind capabilities. 0 - 20 FPM operating speeds, mechanical and emitter/receiver, emergency stops and 12.5" diameter capacity heavy-duty unwind stations.

- AGL 8000R (Thermal and Pressure Sensitive Materials)
- AGL 8000S (Thermal and Pressure Sensitive Materials)
- AGL 8000C (Cold Lamination and Mounting Only)
- AGL 8000T (Heated Top Nip Roller Only)

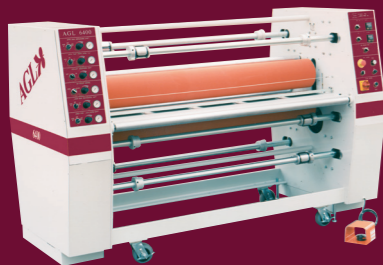


AGL 6400

Laminates and mounts a 62.0" wide maximum thermal or pressure sensitive film and features pneumatically actuated nip roller and pull roll assemblies.

Main supply rolls are equipped with a pneumatic clutch/brake assembly. This feature allows precise and repeatable film tension control as well as bi-directional unwind/rewind capabilities.

0 - 20 FPM operating speeds, mechanical and emitter/receiver emergency stops and 12.5" diameter capacity heavy-duty cantilevered unwind stations.



AGL Patriot

AGL Patriot laminator is designed to specifically address the issues associated with finishing UV, Latex and Solvent based printing technologies. Capable of mounting and laminating up to 62" wide laminates. This is a true high production laminator with run speeds up to 30 FPM. Processes include roll to sheet lamination, roll to roll lamination, mounting, pre-masking and one sided thermal laminating.

- pneumatically actuated nip assembly, as well as a pneumatically actuated pull roll assembly
- dial in shim assembly for mounting and laminating several different thickness
- 10 inch Diameter Unwind/Rewind Capacity



AGL Encore

AGL Encore is capable of mounting and laminating up to 62" wide laminates. This unit features a pneumatically actuated nip assembly as well as a pneumatically actuated pull roll assembly making ease of use unparalleled in the industry. There is a dial in shim assembly for mounting and laminating several different thickness' of products as well as a mechanical unwind tension system to assure repeatable results. Capable of running up to 20 - 30 FPM.

The Encore series is available in 4 different models:

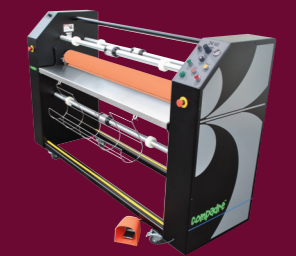
- Encore Maxim Dual heated rollers, Bi-Directional, full of operator friendly options
- Encore DHR Dual heated rollers, Bi-Directional unit
- Encore SH Single heated roller (top). Pressure sensitive, 1 sided heat activated films, and mounting.
- Encore NH No Heat, cold unit. Pressure sensitive laminating and mounting.



AGL Compadre

The Compadre is capable of mounting and laminating up to 61" wide and is designed to satisfy the small to medium sign shop market. It features a six inch diameter steel roller covered with a high release non-crowned silicone covering.

0 - 20 FPM operating speeds, film tension braking system for process repeatability, rotary dial shim stops for preset gap adjustment - adjustable from -1/16 to 1 inch, top heated roller (100 degree preset) - accelerates adhesion and reduces or eliminates silvering.



Features and Options:

Pneumatic Tension
 320° Heated Top Roller
 320° Heated Bottom Roller
 Output Slitting
 Unwind Slitting (upper)
 Cantilevered Supply Shafts

Rotary Outfeed Trimmers
 Thermal Encapsulation
 P.S. Overlaminating
 Maximum Mounting Thickness
 Reversible
 Rear Product Rewind

RTS Brakes
 Easy Web InFeed
 Curl Cam
 Web Cooling
 Silicone Pull Rolls
 Inflatable Material Supply Shafts

AGL has a laminator for every application and process, and if we do not we will build it for you. Visit our plant and find out why AGL has the best performing laminators on the market. We will prove it to you!